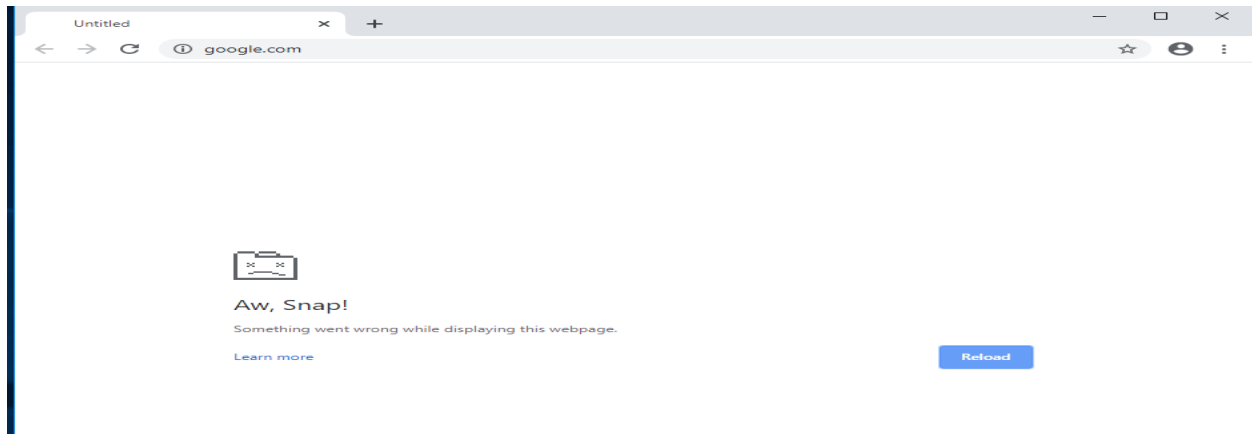


IF google chrome not working , Procedure to resolve the issue



STEP 1)

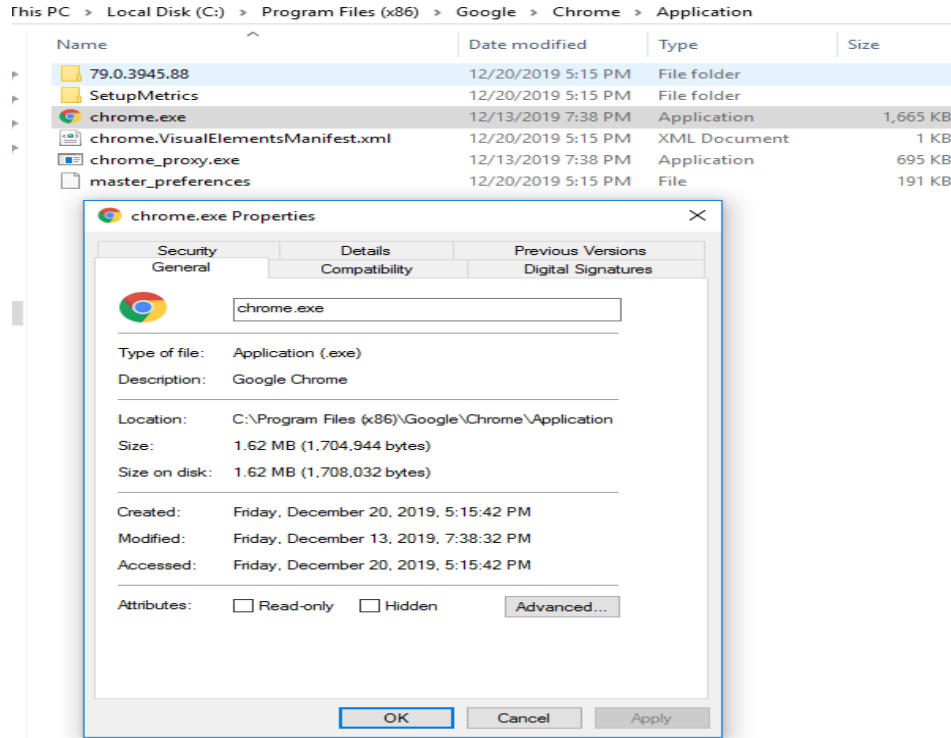
Go to path C:\Program Files (x86)\Google\Chrome\Application

This PC > Local Disk (C:) > Program Files (x86) > Google > Chrome > Application

Name	Date modified	Type	Size
79.0.3945.88	12/20/2019 5:15 PM	File folder	
SetupMetrics	12/20/2019 5:15 PM	File folder	
chrome.exe	12/13/2019 7:38 PM	Application	1,665 KB
chrome.VisualElementsManifest.xml	12/20/2019 5:15 PM	XML Document	1 KB
chrome_proxy.exe	12/13/2019 7:38 PM	Application	695 KB
master_preferences	12/20/2019 5:15 PM	File	191 KB

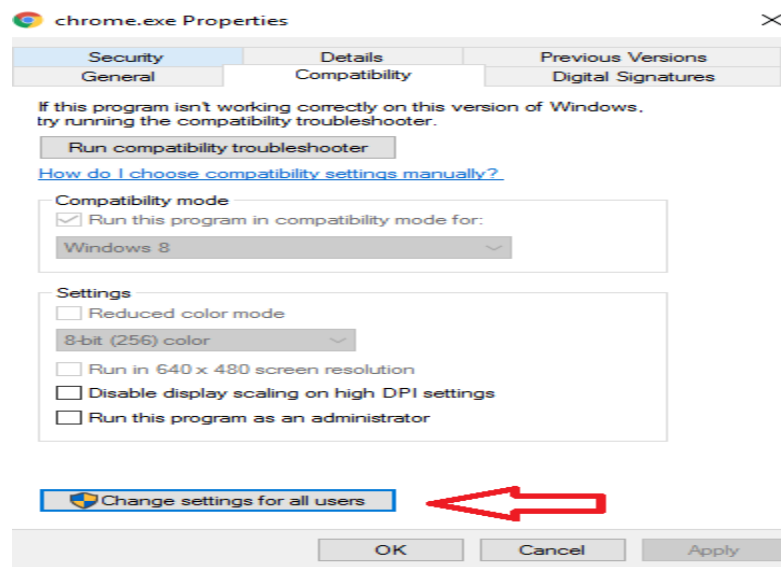
STEP 2)

Then right click chrome.exe and to go properties



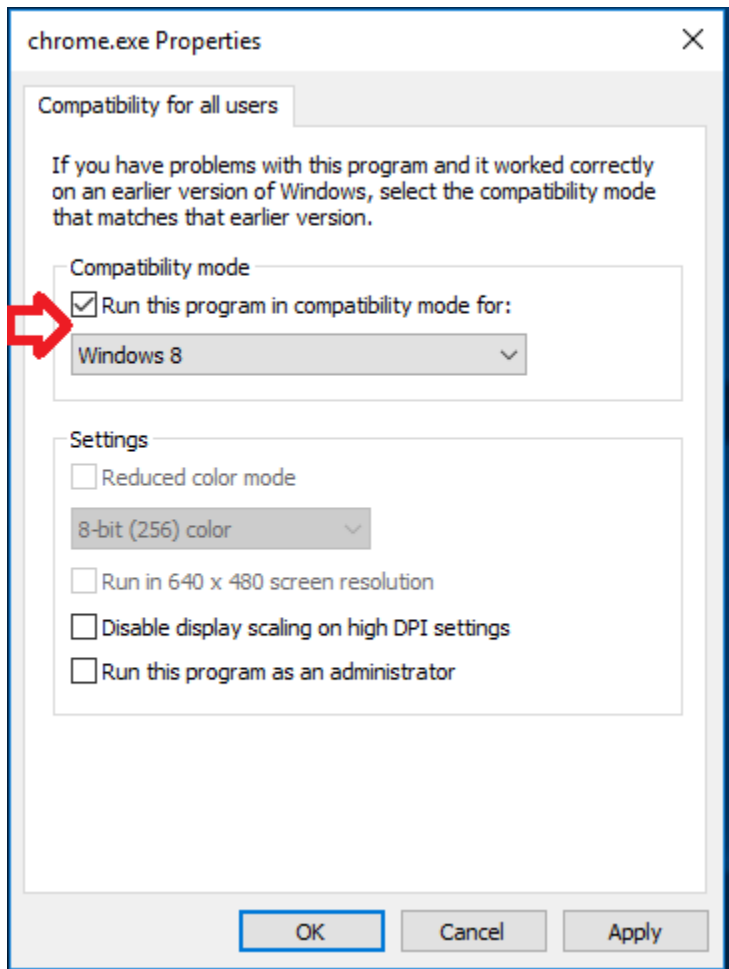
STEP3)

Then go to compatibility tab and click on change setting for all users



Step 4)

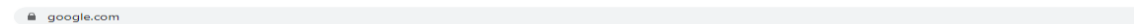
Then click on run this program in compatibility mode for:



Then apply and ok

Step 5)

Then open Google chrome and it should be work fine. If all above steps are done properly.



Google Search I'm Feeling Lucky

Who left the lights on at the North Pole? See how little elves have a big impact

Google offered in: हिन्दी বাংলা తెలుగు మరాఠీ தமிழ் ગુજરાતી ಕನ್ನಡ മലയാളം ਪੰਜਾਬੀ